



AL WASTEWATER/EFFLUENT SUBMERSIBLE PUMPS



■ FEATURE

- Equipped with Auto-cut, silicon carbide double mechanical seal, epoxy cable base treatment.
- Pump Water Resistance can reach IP68 Grade.
- Entire cast iron structure and compact design.
- High head and efficiency for wide range design.
- 7½HP and 10HP Triangular Handle design, for easy handling on guide rail system.



50AL21.5
50AL22.2

80AL21.5
80AL22.2
80AL23.7A

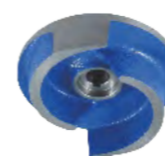
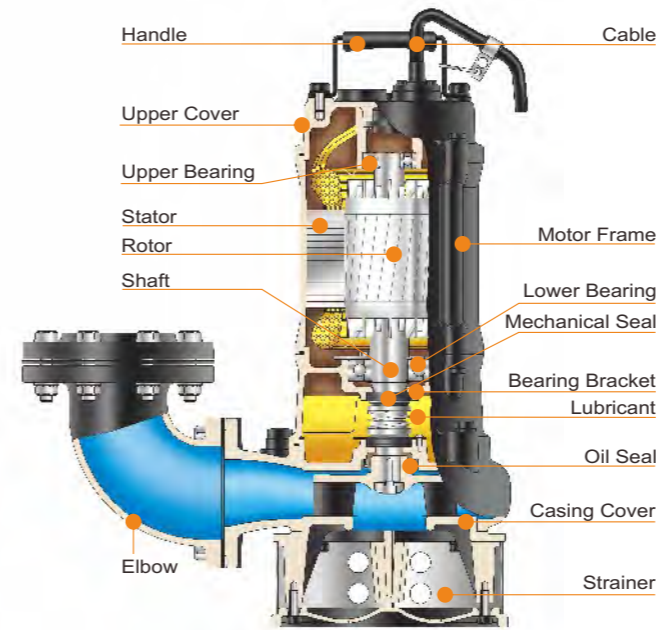
80(100)AL25.5
80(100)AL27.5

■ APPLICATIONS

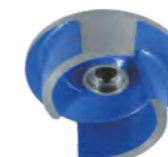
- Waste water drainage for all industries.
- Pumping surface water, drainage water and flood water.
- Extraction of water from river and lake.
- Pressure - Reducing Design.

■ PRODUCT NOMENCLATURE

80	AL	2	1.5
Discharge mm	Type	Pole	kW



50AL21.5

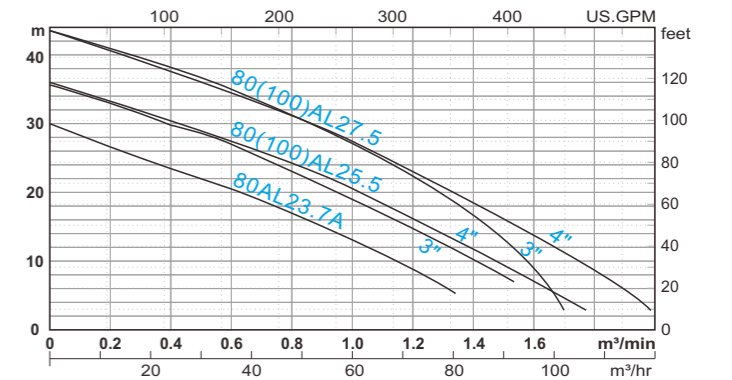
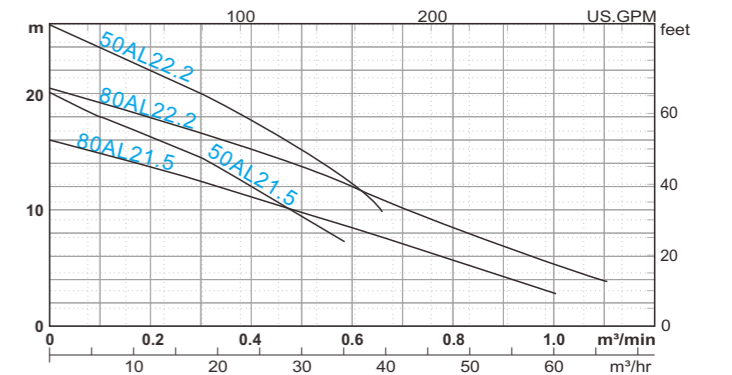


80AL21.5
80AL22.2

■ SPECIFICATIONS

Discharge (mm)		50 • 80 • 100
Limits Of Use	Liquid Temp.	0~40°C (32~104°F)
	Applications	Wastewater Sewage and Drainage water
	Submersion Depth	30m (100feet)
Type	Frequency	60Hz
	Motor	2P (3600RPM) • Dry Motor
	Insulation	Class B(2~3HP) • Class F(5~10HP)
	Protection	IP68
	Protector	Auto-cut
	Bearing	Ball Type
Material	M.seal	Double M.seals
	Impeller	Semi-open
	Upper Cover	FC-200
	Motor Frame	FC-200
	Shaft End	SUS403(2~5HP) • SUS420J2(7.5~10HP)
	M.seal	Upper: Carbon/Ceramic Lower: Silicon/Silicon
	Casing	FC-200
Impeller	FC-200	
Cable	VCT or H07RN-F or SJOW/SOW	
Optional	Pumps can be customized to fit specifications	

■ PERFORMANCE CURVES



■ PERFORMANCE SPEC.

Model	HP(kW)	Discharge Inch(mm)	Phase Ø	Start Method	Standard		Solid Passage mm(inch)	Weight kg(lb)		Dimension (mm)				
					m - m³/min	ft - GPM		1Ø	3Ø	A	B	C	D	
50AL21.5	2 (1.5)	2" (50)	1 3	Capacitor Direct	12 - 0.4	40 - 106	20 (¾")	35 (77)	31 (68)	279	-	206	565	514
50AL22.2	3 (2.2)	2" (50)	1 3	Capacitor Direct	17.5 - 0.4	58 - 106	20 (¾")	38 (84)	34 (75)	279	-	206	598	514
80AL21.5	2 (1.5)	3" (80)	1 3	Capacitor Direct	8 - 0.6	25 - 160	20 (¾")	37 (82)	32 (71)	385	247	207	575	524
80AL22.2	3 (2.2)	3" (80)	1 3	Capacitor Direct	12 - 0.6	40 - 160	20 (¾")	39 (86)	35 (77)	385	247	207	608	524
80AL23.7A	5 (3.7)	3" (80)	3	Direct	20.5 - 0.6	68 - 160	20 (¾")	-	49 (108)	473	278	242	-	578
80(100)AL25.5	7½ (5.5)	3" (80) 4" (100)	3	Direct	26.5 - 0.6 20 - 1.0	87 - 160 66 - 265	20 (¾")	-	74 (163)	537 565	342	283	-	689
80(100)AL27.5	10 (7.5)	3" (80) 4" (100)	3	Direct	34.5 - 0.6 27 - 1.0	114 - 160 89 - 265	20 (¾")	-	80 (176)	537 565	342	283	-	689

Note: Weight Without Cable & Elbow Set

