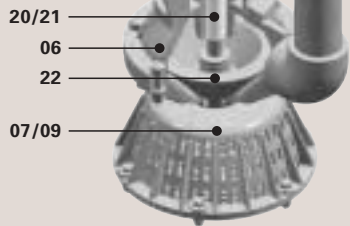


**FLANGE
SUPPORT PLATES**

AS

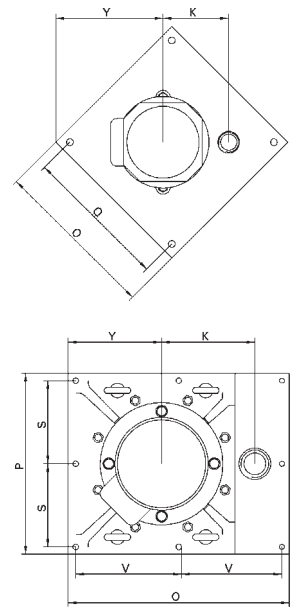
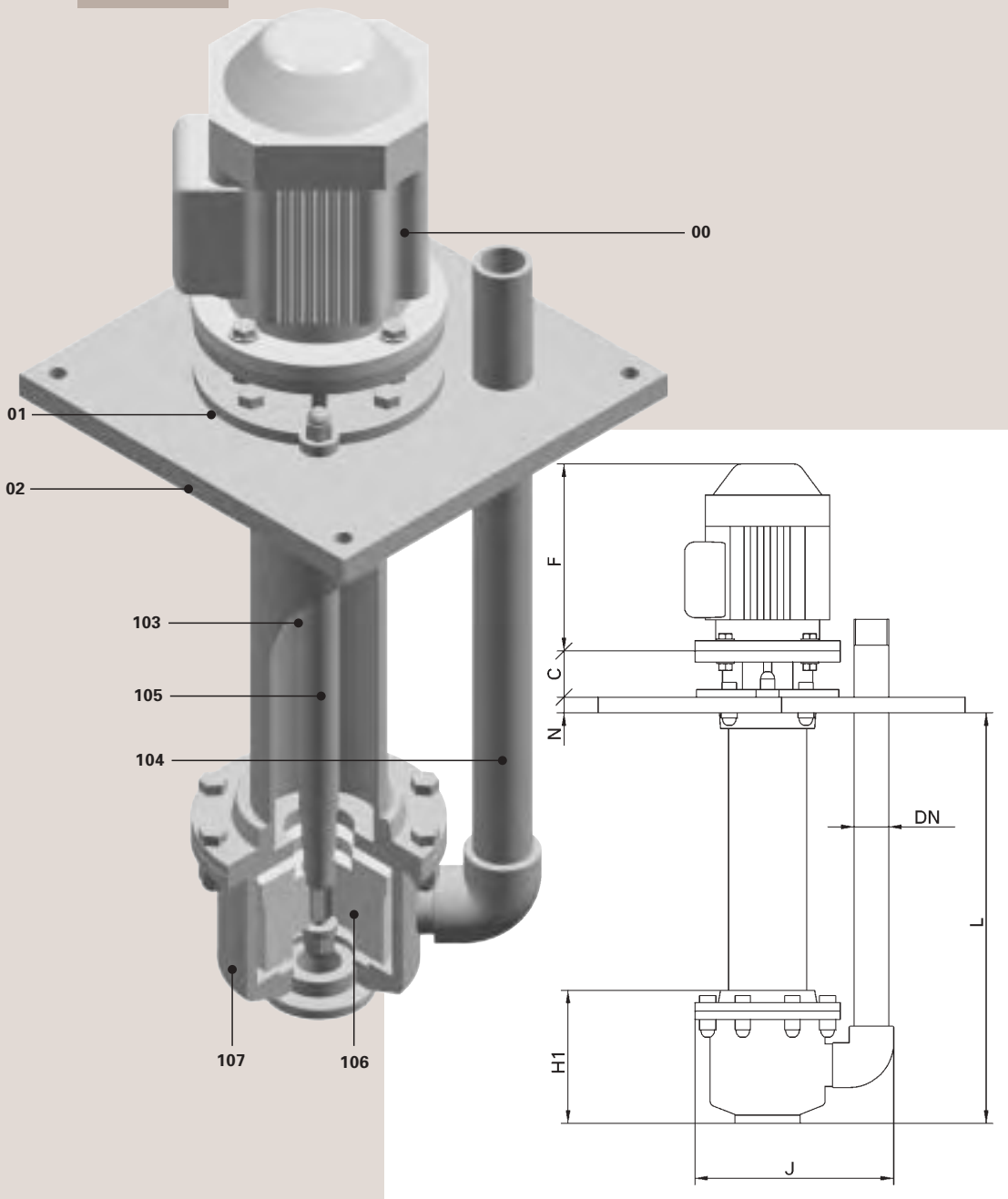


- 00** Motore
Motor
- 01** Castelletto motore
Motor stool
- 02** Flangia appoggio
Support plate
- 03** Guaina
Support column
- 06** Corpo pompa
Pump casing
- 07/09** Coperchio pompa con cestello filtro
Pump cover with suction strainer
- 14/19** Albero
Shaft
- 20/21** Bussole
Bushings
- 22** Girante
Impeller
- 40** Tubo mandata
Delivery pipe

Dimensioni d'ingombro.
Overall dimensions.

Tipo Model	Dimensioni pompa - Pumps dimensions							Dimensioni flangia appoggio - Support plate dimensions							
	C	DN	F	G min.	G max	H1	K	L	N	O	P	Q	S	V	Y
AS 10	45	15	Secondo dimensioni motore According to motor size	200	1000	85	85	140	15	160	-	140	-	-	87
AS 20	45	20		250	1000	170	102	175	15	250	-	220	-	-	163
AS 30	107	25		320	3000	255	151	280	15	350	-	220	-	-	247
AS 40	107	32		320	3000	255	151	280	15	350	-	220	-	-	247
AS 50	112	50		465	3000	358	190	370	20	450	370	-	170	210	190
AS 50	112	50		465	3000	358	190	370	20	450	370	-	170	210	190
AS 70	110	65		1000	3000	530	255	470	20	550	400	-	185	260	195
AS 80	110	80		1000	3000	530	255	470	20	550	400	-	185	260	195
AS 100	110	100		1000	3000	530	305	525	30	600	400	-	185	285	195

Dimensioni in mm non impegnative. H1 min. sommergezza. Bocchelli a richiesta. **Approximate dimensions in mm. H1 min. depth. Nozzles on request.**



**FLANGE
SUPPORT PLATES**

- | | | |
|----------------------------------------------------|-------------------------------------------------|----------------------------------------------|
| 00 Motore
<i>Motor</i> | 103 Guaina
<i>Support column</i> | 106 Girante
<i>Impeller</i> |
| 01 Castelletto motore
<i>Motor stool</i> | 104 Tubo mandata
<i>Delivery pipe</i> | 107 Corpo pompa
<i>Pump casing</i> |
| 02 Flangia appoggio
<i>Support plate</i> | 105 Albero
<i>Shaft</i> | |

BS

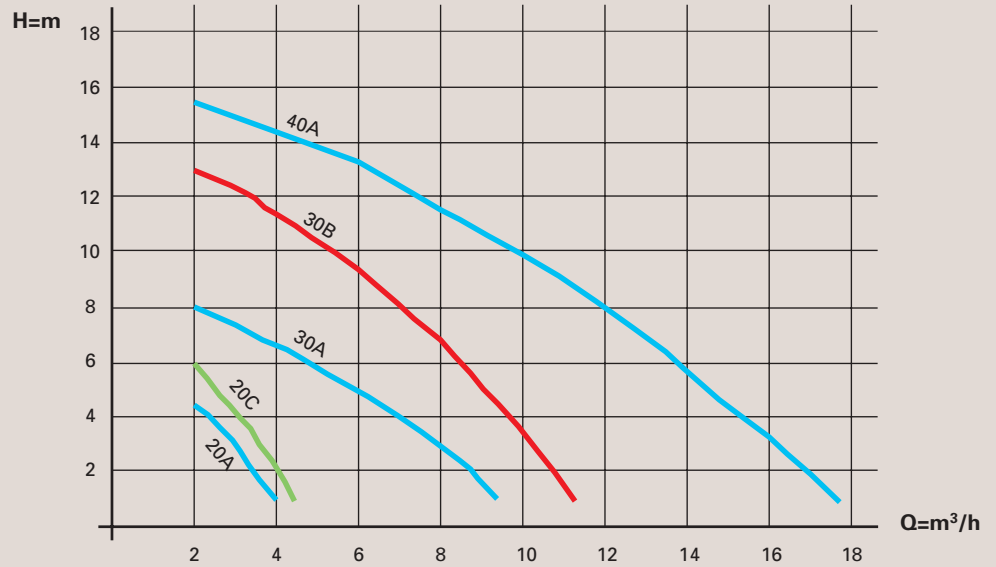
Dimensioni d'ingombro.
Overall dimensions.

Tipo Model	Kw	Poli Poles	Dim. Dim.	Dimensioni pompa - Pumps dimensions							Dimensioni flangia appoggio - Support plate dimensions						
				C	DN	F	G	H1	K	L	N	O	P	Q	S	V	Y
BS 20 A	0,25	2	63	45	20	Secondo dimensioni motore According to motor size	400	170	102	175	15	250	-	140	-	-	163
BS 30 B	1,1	2	80	107	25		550	255	151	280	15	350	-	220	-	-	247
BS 40 A	1,5	2	90	107	32		550	255	151	280	15	350	-	200	-	-	247
BS 50 B	3	2	100	112	50		700	358	190	370	20	450	370	-	170	210	190
BS 70 A	5,5	2	132	110	65		900	530	255	470	20	550	400	-	185	260	195
BS 80 A	7,5	2	132	110	80		900	530	255	470	20	550	400	-	185	260	195

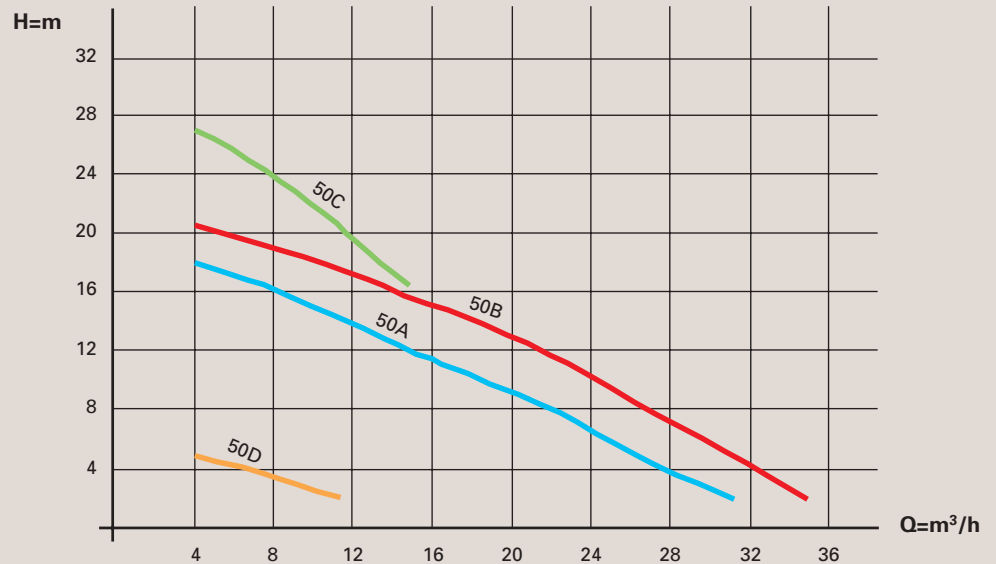
Dimensioni in mm non impegnative. H1 min. sommergezza. Bocchelli a richiesta. *Approximate dimensions in mm. H1 min. depth. Nozzles on request.*

CURVE DI FUNZIONAMENTO / PERFORMANCES

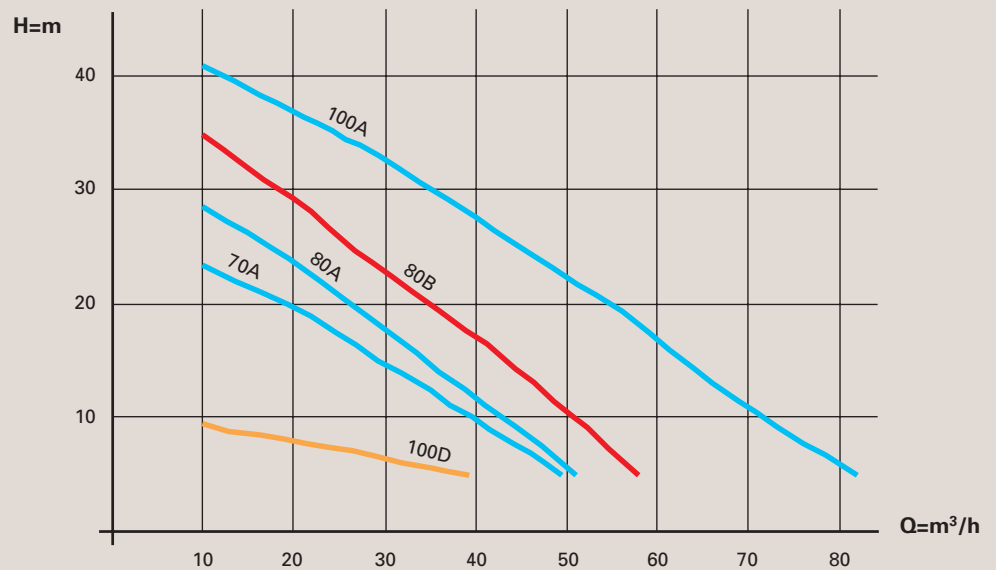
- 20A:** kW 0,25 - 2P
OPEN IMPELLER.
- 20C:** kW 0,25 - 2P
CLOSED IMPELLER.
- 30A:** kW 0,55 - 2P
OPEN IMPELLER.
- 30B:** kW 1,1 - 2P
OPEN IMPELLER.
- 40A:** kW 1,5 - 2P
OPEN IMPELLER.



- 50A:** kW 2,2 - 2P
OPEN IMPELLER.
- 50B:** kW 3 - 2P
OPEN IMPELLER.
- 50C:** kW 3 - 2P
CLOSED IMPELLER.
- 50D:** kW 1,5 - 4P
OPEN IMPELLER.



- 70A:** kW 4 - 2P
OPEN IMPELLER.
- 80A:** kW 5,5 - 2P
OPEN IMPELLER.
- 80B:** kW 9,2 - 2P
OPEN IMPELLER.
- 100A:** kW 11 - 2P
OPEN IMPELLER.
- 100D:** kW 4 - 4P
OPEN IMPELLER.



Le prestazioni sono riferite a prove con acqua a temperatura ambiente. Peso specifico 1000 kg/m³. Viscosità 1cp. 50 hz.
 Performances refer to tests performed with water at an ambient temperature. Specific gravity 1000 kg/m³. Viscosity 1 cp. 50 hz.