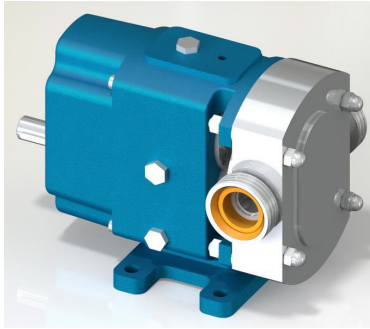




GQT 1" Rotary Lobe Pump



Performance:

Flow rate	7.2 m ³ /h
Pressure	1 - 10 bar
Temperature	0 - 150 °C
Speed	1 - 1000 d/d
Viscosity	150 - 250000 SSU

- 1" Standard Port Size
- 1" Enlarged Port Size

Technical Features:

- ✓ Rotary lobe pump
- ✓ 1" threaded ports
- ✓ Suitable for hygienic applications involving food
- ✓ Good clean in place qualities
- ✓ Gentle, low pulsation pumping mechanism
- ✓ Compact design
- ✓ Various material options
- ✓ Various sealing options
- ✓ Available with sanitary clamp connection and heating jacket
- ✓ Motor or gearbox drive available
- ✓ 230v, three phase 50/60hz motors available
- ✓ Manufactured according to CE regulations

Applications:

- ✓ Sanitary and hygienic applications
- ✓ Shear sensitive products
- ✓ Food processing
- ✓ Pharmaceutical
- ✓ Chemical
- ✓ Paper and pulp
- ✓ Gels and greases
- ✓ Paint and dyes

Material Options:

- ✓ Pump body & cover: Cast iron
- ✓ Lobe casing & lobes: Steel cast, stainless AISI 304 / 316
- ✓ Bearings: Bearing
- ✓ Sealing: Mechanical seal, lip seal

Capacity & Power Table

Capacity	Speed (rpm)	Pressure			Viscosity
		0 Bar	3.5 Bar	7 Bar	
0.6	100	0.75 HP	0.75 HP	1 HP	75000 SSU
1.2	200	1 HP	1 HP	1.5 HP	75000 SSU
3	500	1.5 HP	2 HP	3 HP	15000 SSU
3.8	750	1.5 HP	2 HP	3 HP	2500 SSU
4.2	750	1.5 HP	2 HP	3 HP	500 SSU
5	900	1.5 HP	2 HP	3 HP	150 SSU

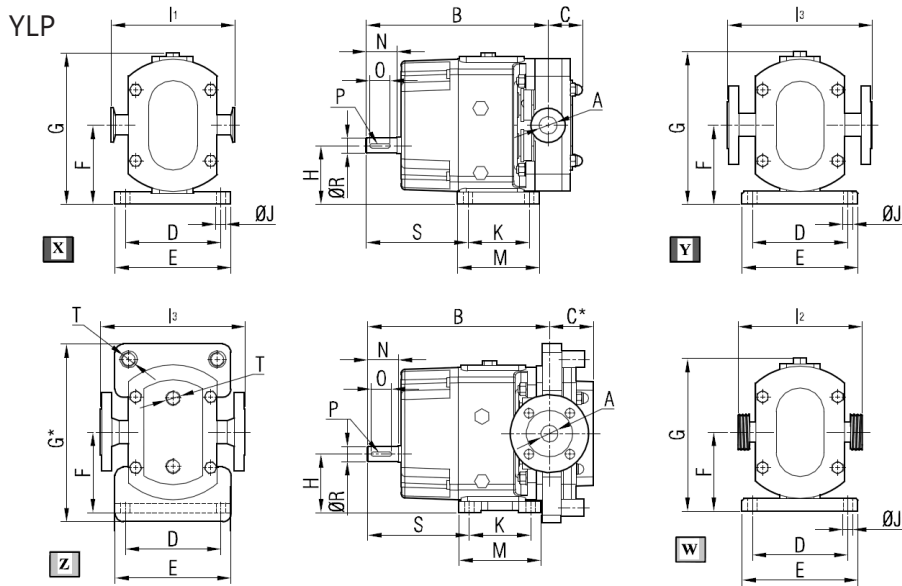
Motor Powers	
1.5 HP	900 d/d (rpm)
Motor Body	
90	

Motor Powers	
1.5 HP	750 d/d (rpm)
2 HP	900 d/d (rpm)
Motor Body	
100	

Motor Powers	
2 HP	750 d/d (rpm)
3 HP	900 d/d (rpm)
Motor Body	
112	

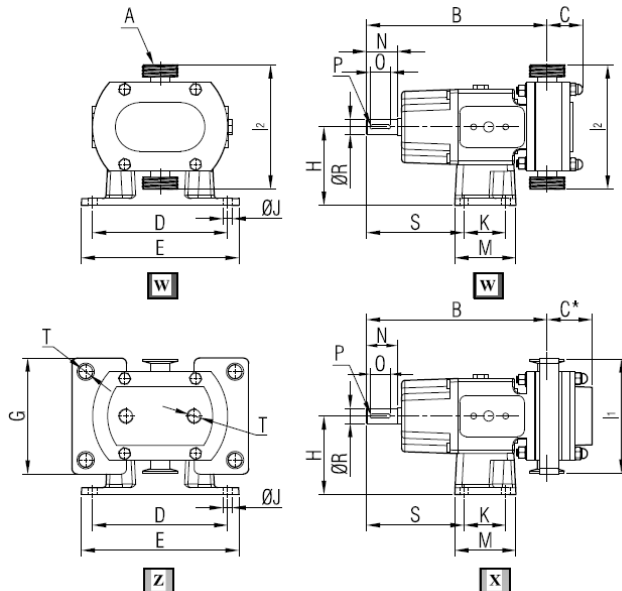


Pump Dimensions:



X	Pump with Sanitary Clamp Connection
Y	Pump with Flange Connection
Z	Pump with Heating Jackets
W	Pump with Male Thread Connection
B	For Pump with Code 001
B*	For Pump with Code 002

Pump Code	A	B	B*	C	C*	D	E	F	G	G*	H	I ₁	I ₂	I ₃	J	K	M	N	O	P	R	S	T	kg	
YLP2 012	DN25	265	290	52	66	140	170	116	222	260	86	167	182	212	14	90	120	45	30	6x6	22	149	1/2"	32	
	DN40											223	246	220											33

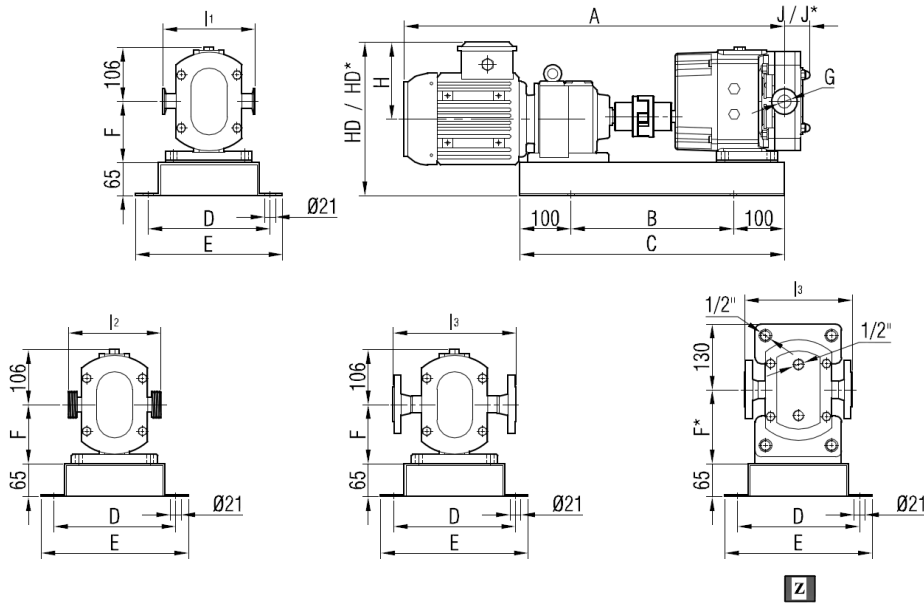


X	Pump with Sanitary Clamp Connection
Z	Pump with Heating Jackets
W	Pump with Male Thread Connection
B	For Pump with Code 001
B*	For Pump with Code 002

Pump Code	A	B	B*	C	C*	D	E	G	H	I ₁	I ₂	J	K	M	N	O	P	R	S	T	kg		
YLP2 012	DN25	265	290	52	66	198	231	170	115	167	182	13	61	90	45	30	6x6	22	143	1/2"	30		
	DN40									223	246												



Coupling Dimensions - Gearbox Drive::



***Add 25 mm to A dimension for 002 type pump.

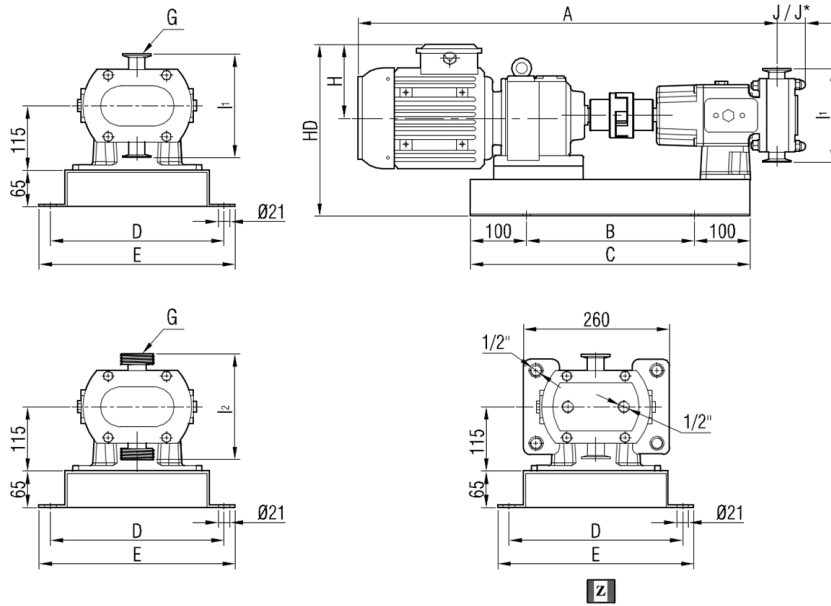
Pump Code	A	B	B*	C	C*	D
YLP2 001	012	DN25 DN40	265	290	52	66

I ₁	Pump with Sanitary Clamp Connection
I ₂	Pump with Male Thread Connection
I ₃	Pump with Flange Connection
Z / HD* / F* / J*	Pump with Heating Jackets

Motor Power & Speed	A	HD	HD*	H	B	C	D	E	F	F*	Kg
1 hp / 0.75 kw	734	268	293	118					120	149	68
40/240 d/d (rpm)											
1.5 hp / 1.1 kw	748	282	307		320	520	250	290			72
61/87 d/d (rpm)											
1.5 hp / 1.1 kw	726	279	308						116	145	65
200/400 d/d (rpm)											
2 hp / 1.5 kw	829	301	301	132	420	620	310	350	145	174	96
40/98 d/d (rpm)											
2 hp / 1.5 kw	779	282	307		320	520	250	290	120	149	73
120/480 d/d (rpm)											
3 hp / 2.2 kw	829	301	301		420	620	310	350	145	174	100
55/98 d/d (rpm)											
3 hp / 2.2 kw	809	291	316		320	520	250	290	120	149	77
176/544 d/d (rpm)											
4 hp / 3 kw	866	310	310	141	420	620	310	350	145	174	103
68/245 d/d (rpm)											
4 hp / 3 kw	809	291	316		320	520	250	290	120	149	80
265/556 d/d (rpm)											



Coupling Dimensions - Gearbox Drive::



***Add 25 mm to A dimension for 002 type pump.

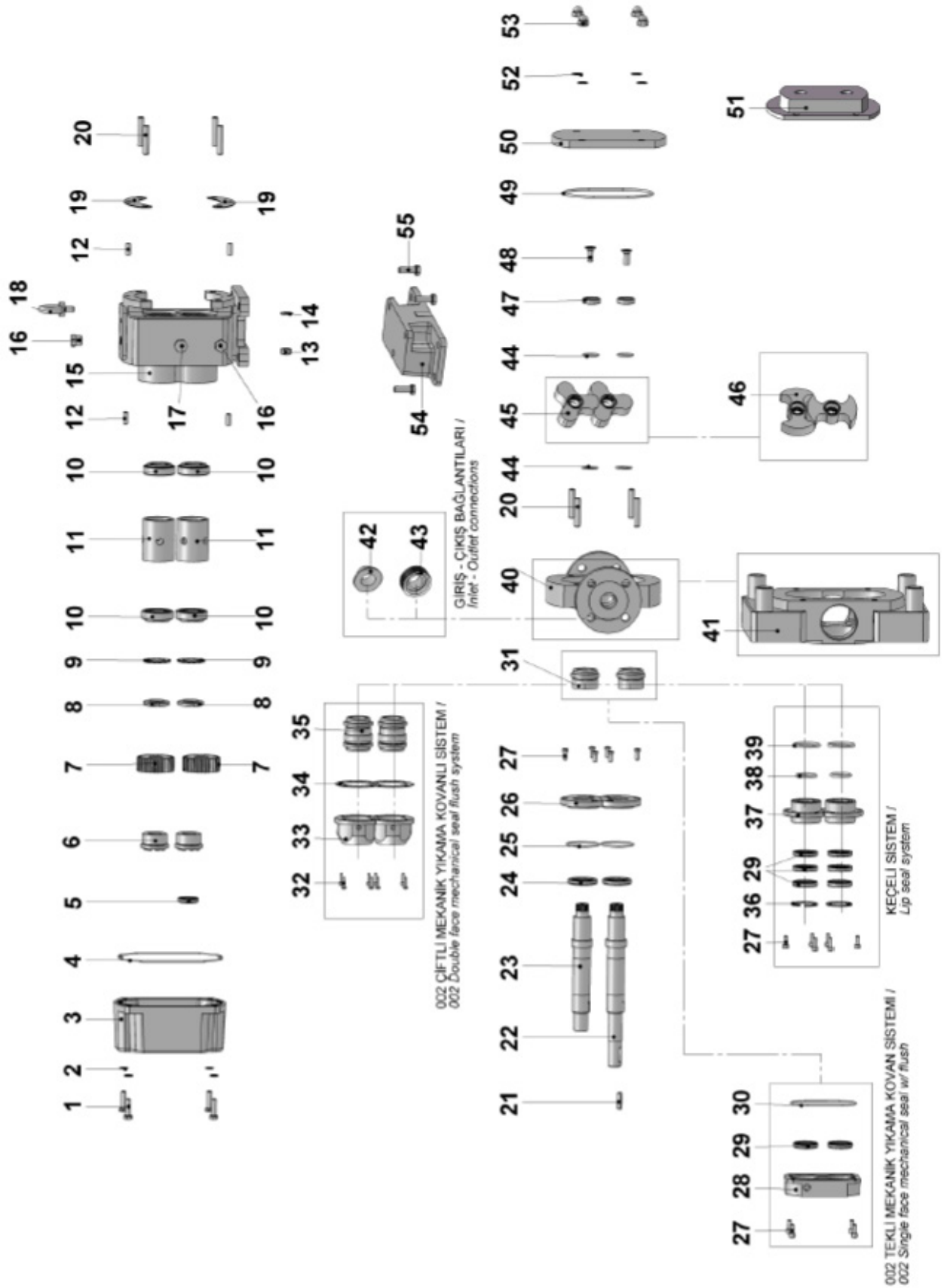
Pump Code	G	I ₁	I ₂	J	J*
YLP2	012	DN25	167	182	
001		DN40	223	246	52 66

I ₁	Pump with Sanitary Clamp Connection
I ₂	Pump with Male Thread Connection
Z / J*	Pump with Heating Jackets

Motor Power & Speed	A	HD	H	B	C	D	E	Kg
1 hp / 0.75 kw	734	293	118					66
40/240 d/d (rpm) IRAM53/80M								
1.5 hp / 1.1 kw	748	307		300	500	310	350	71
61/87 d/d (rpm) IRAM53/90S								
1.5 hp / 1.1 kw	726	308						64
200/400 d/d (rpm) IRAM42/90S								
2 hp / 1.5 kw	829	301	132	350	550	330	370	89
40/98 d/d (rpm) IRAM63/90L								
2 hp / 1.5 kw	779	307		300	500	310	350	72
120/480 d/d (rpm) IRAM52/90L								
3 hp / 2.2 kw	829	301		350	550	330	370	92
55/98 d/d (rpm) IRAM63/C90L								
3 hp / 2.2 kw	809	316		300	500	310	350	76
176/544 d/d (rpm) IRAM52/100L								
4 hp / 3 kw	866	310	141	350	550	330	370	95
68/245 d/d (rpm) IRAM62/100L								
4 hp / 3 kw	809	316		300	500	310	350	79
265/556 d/d (rpm) IRAM52/100L								



Spare Parts List:





No.	Part Name.	Qty.	No.	Part Name.	Qty.
1	Hex Socket M8x35	4	29	Lip Seal $\varnothing 30 \times \varnothing 42 \times 7$	8
2	M8 Washer	4	30	Flush O-Ring	1
3	Back Cover	1	31	Single Face Mechanical Seal	2
4	Back Cover O-Ring	1	32	Hex Socket M4x15	8
5	Lip Seal $\varnothing 24 \times \varnothing 35 \times 7$	1	33	Flush of Double Face Mechanical	2
6	Squeezer (CTL-350FM- $\varnothing 24$)	2	34	Flush Gasket of Double Face Mechanical Seal	2
7	Spur Gear	2	35	Double Face Mechanical Seal	2
8	Lock Nut M30x1.5	2	36	Internal Circlip ($\varnothing 42$)	2
9	Lock Washer M30	2	37	Flush of Lip Seal	2
10	Bearing 32006	4	38	Outer O-Ring of Lip Seal Housing	2
11	Spacer	2	39	Front Face O-Ring of Lip Seal Housing	2
12	Pin $\varnothing 8 \times 25$	4	40	Lobe Casing	1
13	M10 Nut	4	41	Jacketed Lobe Casing	1
14	M10 Washer	4	42	Ferrule	2
15	Casing	1	43	Rakor	2
16	Caps R3/8"	2	44	Lobe O-Ring	4
17	Oil Indicator R3/8"	1	45	Tri-Lobe	2
18	Eyebolt	1	46	Bi-Lobe	2
19	Adjusting Plate	2	47	Lobe Fastener	2
20	Studbolt M10x50	8	48	Countersunk Head Screws M10x25	2
21	Coupling Key 6x6x30 A	1	49	Cover O-Ring	1
22	Driving Shaft	1	50	Front Cover	1
23	Driven Shaft	1	51	Cover (w/Heating Jacket)	1
24	Lip Seal $\varnothing 36 \times \varnothing 50 \times 7$	2	52	M10 Washer	4
25	Bearing Cover O-Ring	2	53	M10 Domed Cap Nut	4
26	Bearing Cover	2	54	Horizontal Pump Foot	1
27	Hex Socket M6x15	10	55	Hex Bolt M10x30	3
28	Flush of Single Face Mechanical Seal	1			