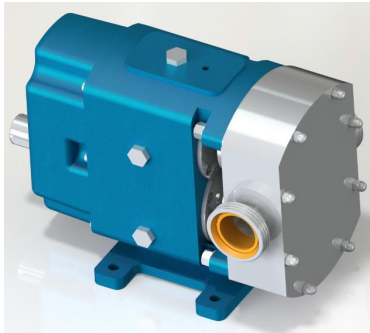




GQT 3" Rotary Lobe Pump



Performance:

Flow rate	54 m ³ /h
Pressure	1 - 7 bar
Temperature	0 - 150 °C
Speed	1 - 500 d/d
Viscosity	150 - 250000 SSU

- 3" Standard Port Size
- 4" Enlarged Port Size

Technical Features:

- ✓ Rotary lobe pump
- ✓ 2½" threaded ports
- ✓ Suitable for hygienic applications involving food
- ✓ Good clean in place qualities
- ✓ Gentle, low pulsation pumping mechanism
- ✓ Compact design
- ✓ Various material options
- ✓ Various sealing options
- ✓ Available with sanitary clamp connection and heating jacket
- ✓ Motor or gearbox drive available
- ✓ 230v, three phase 50/60hz motors available
- ✓ Manufactured according to CE regulations

Applications:

- ✓ Sanitary and hygienic applications
- ✓ Shear sensitive products
- ✓ Food processing
- ✓ Pharmaceutical
- ✓ Chemical
- ✓ Paper and pulp
- ✓ Gels and greases
- ✓ Paint and dyes

Material Options:

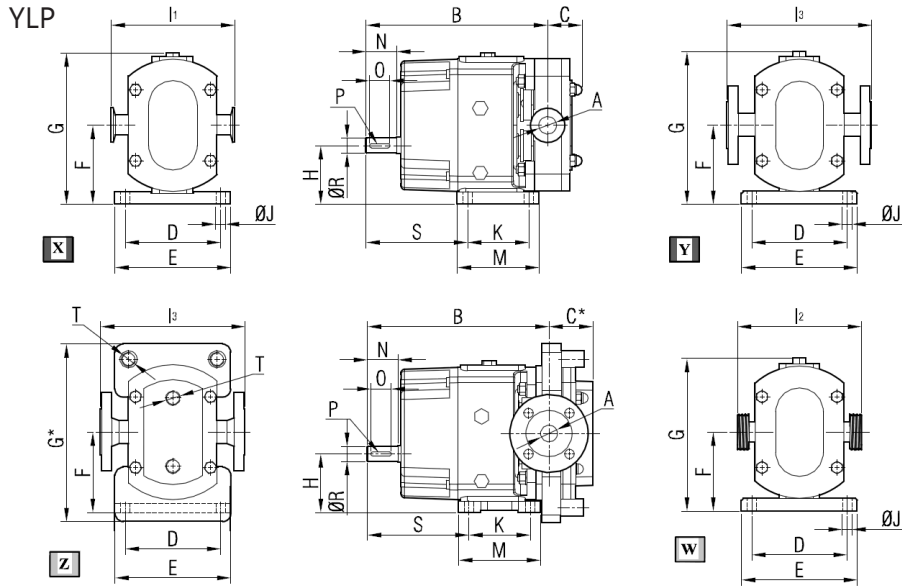
- ✓ Pump body & cover: Cast iron
- ✓ Lobe casing & lobes: Steel cast, stainless AISI 304 / 316
- ✓ Bearings: Bearing
- ✓ Sealing: Mechanical seal, lip seal

Capacity & Power Table

Capacity	Speed (rpm)	Pressure			Viscosity
		0 Bar	3.5 Bar	7 Bar	
3.1	30	2 HP	3 HP	3 HP	250000 SSU
6.2	60	3 HP	4 HP	5.5 HP	250000 SSU
10.4	100	4 HP	5.5 HP	7.5 HP	75000 SSU
15.7	150	5.5 HP	7.5 HP	10 HP	75000 SSU
26.2	250	5.5 HP	10 HP	15 HP	15000 SSU
31.5	300	5.5 HP	10 HP	15 HP	2500 SSU
34	350	5.5 HP	10 HP	15 HP	500 SSU
39	400	5.5 HP	10 HP	15 HP	150 SSU

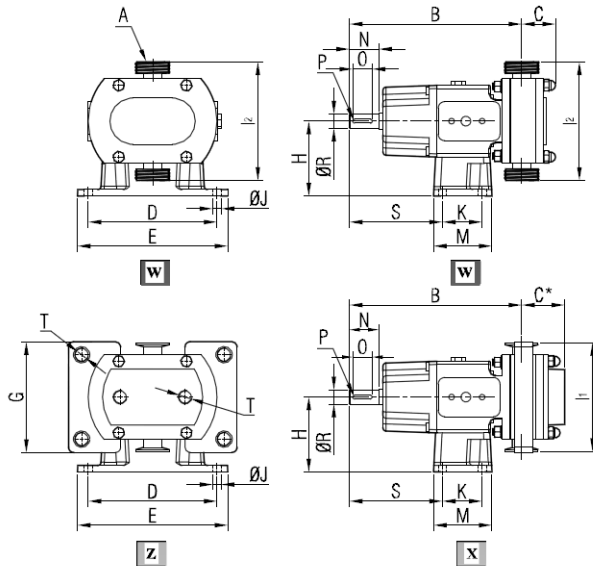


Pump Dimensions:



X	Pump with Sanitary Clamp Connection
Y	Pump with Flange Connection
Z	Pump with Heating Jackets
W	Pump with Male Thread Connection
B	For Pump with Code 001
B*	For Pump with Code 002

Pump Code	A	B	B*	C	C*	D	E	F	G	G*	H	I ₁	I ₂	I ₃	J	K	M	N	O	P	R	S	T	kg
YLP5 180	DN80	463	488	86	110	216	260	187	364	392	127	268	302	394	17	172	216	72	56	14x9	45	244	1"	140
	DN100											344	396	396										142

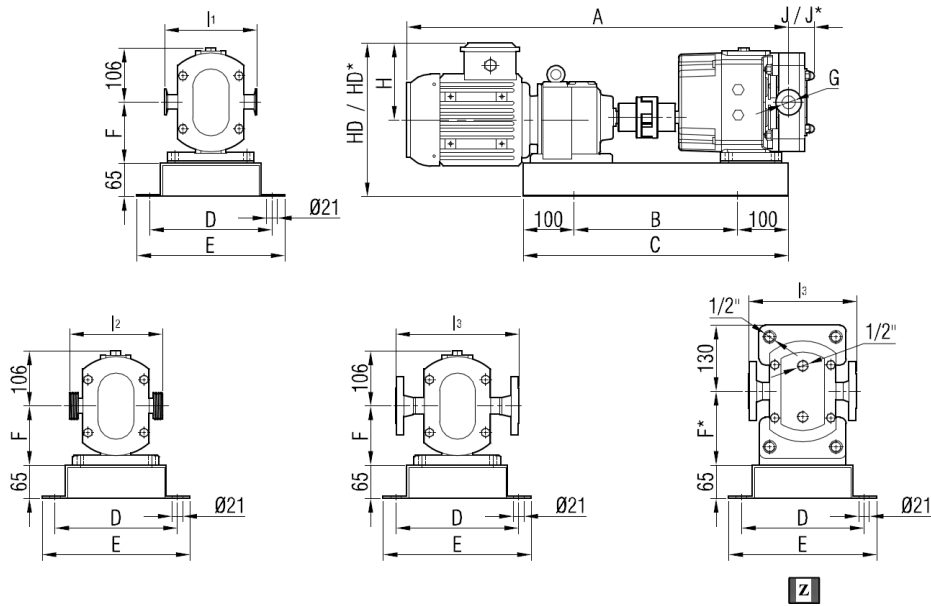


X	Pump with Sanitary Clamp Connection
Z	Pump with Heating Jackets
W	Pump with Male Thread Connection
B	For Pump with Code 001
B*	For Pump with Code 002

Pump Code	A	B	B*	C	C*	D	E	G	H	I ₁	I ₂	J	K	M	N	O	P	R	S	T	kg
YLP5 180	DN80	463	488	86	110	278	310	274	180	268	302	13	139	171	72	56	14x9	45	210	1"	134
	DN100									344	396										



Coupling Dimensions - Gearbox Drive::



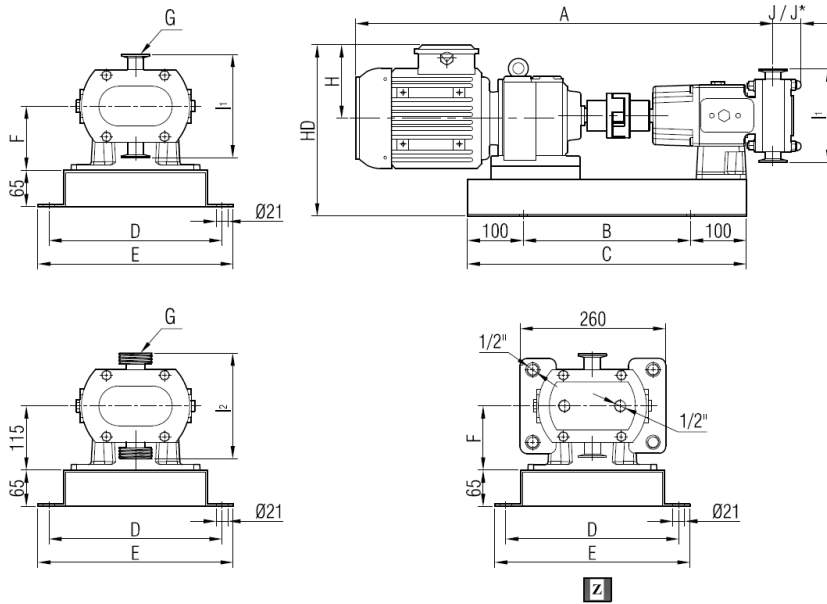
***Add 25 mm to A dimension for 002 type pump.

Pump Code	G	I ₁	I ₂	I ₃	J	J*	I ₁	Pump with Sanitary Clamp Connection
YLP5	180	DN80	268	302	394	86	I ₂	Pump with Male Thread Connection
001		DN100	344	396	392		I ₃	Pump with Flange Connection
							Z / HD* / F* / J*	Pump with Heating Jackets

Motor Power & Speed	A	HD	HD*	H	B	C	D	E	F	F*	Kg
5.5 hp / 4 kw	1137	338	378	149	650	850	340	380	200		237
55/95 d/d (rpm) IRAM72/112M											
5.5 hp / 4 kw	1092	330	383	182	580	780	340	380	187		220
104/480 d/d (rpm) IRAM62/112M											
7.5 hp / 5.5 kw	1277	403	403	182	750	950	420	460	240	240	298
43/91 d/d (rpm) IRAM83/132S											
7.5 hp / 5.5 kw	1182	371	411	182	650	850	340	380	200		248
104/465 d/d (rpm) IRAM72/132S											
10 hp / 7.5 kw	1228	371	411	182	650	850	340	380	200		259
130/465 d/d (rpm) IRAM72/132M											
15 hp / 11 kw	1228	371	411	182	650	850	340	380	200		261
200/465 d/d (rpm) IRAM72/C132M											
20 hp / 15 kw	1425	456	456	225	750	950	420	460	240	240	405
131/456 d/d (rpm) IRAM82/160L											
20 hp / 15 kw	1492	494	494	225	850	1050	420	460	285	285	434
68/139 d/d (rpm) IRAM92/160L											
25 hp / 18.5 kw	1437	480	480	248	750	950	420	460	240	240	425
188/456 d/d (rpm) IRAM82/180M											
25 hp / 18.5 kw	1528	510	510	241	850	1050	420	460	285	285	454
85/185 d/d (rpm) IRAM92/180M											



Coupling Dimensions - Gearbox Drive::



***Add 25 mm to A dimension for 002 type pump.

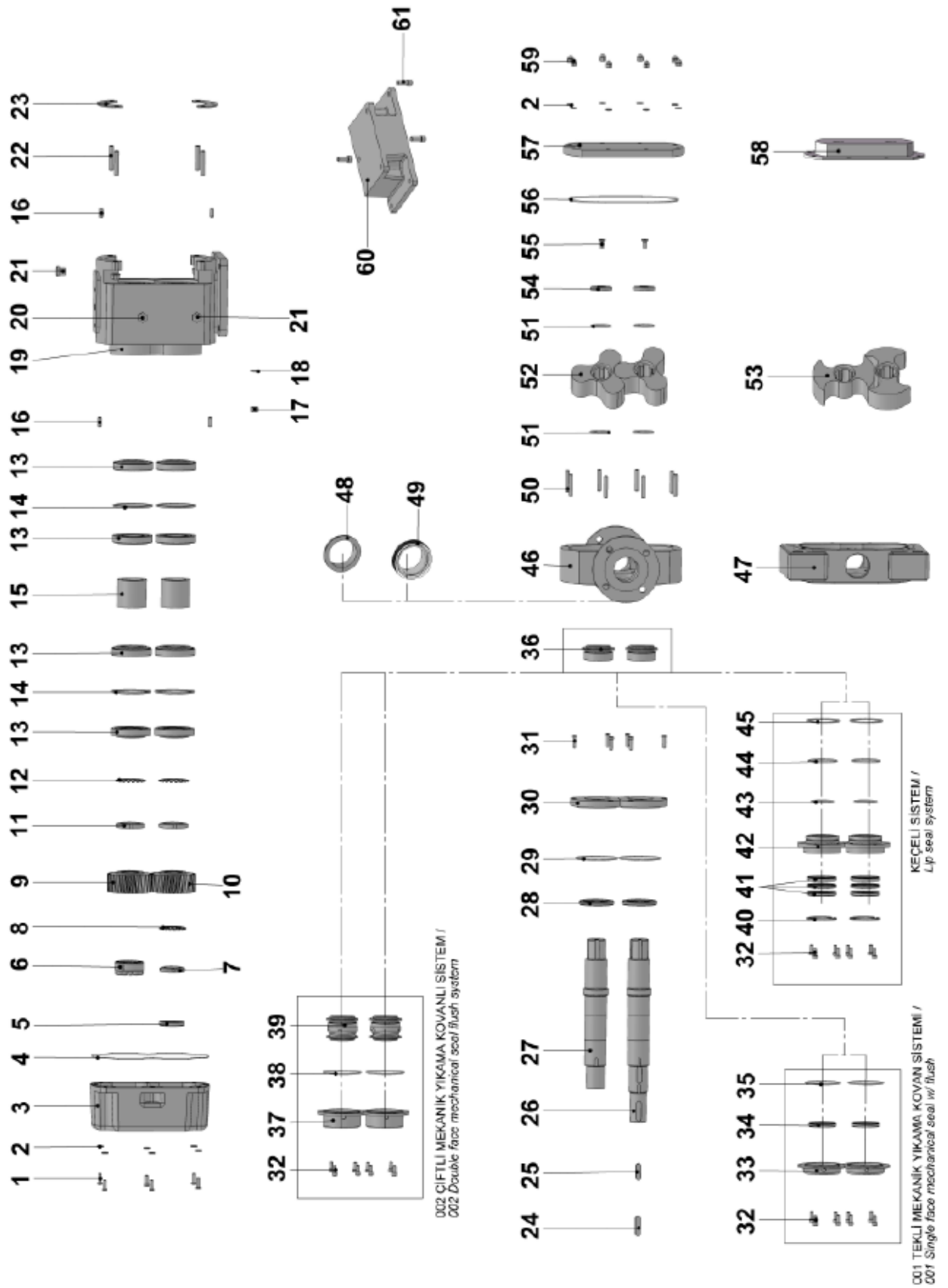
Pump Code	G	I ₁	I ₂	J	J*
YLP5 001	180	DN80	268	302	86
		DN100	344	396	110

I ₁	Pump with Sanitary Clamp Connection
I ₂	Pump with Male Thread Connection
Z / J*	Pump with Heating Jackets

Motor Power & Speed	A	HD	H	B	C	D	E	F	Kg
5.5 hp / 4 kw	1137	378	149	650	760	410	450	180	232
55/95 d/d (rpm) IRAM72/112M				580	700				216
5.5 hp / 4 kw	1092			750	860	460	500		285
104/480 d/d (rpm) IRAM62/112M									
7.5 hp / 5.5 kw	1277	403	182	650	760	410	450	180	243
43/91 d/d (rpm) IRAM83/132S									
7.5 hp / 5.5 kw	1182	411		650	760	410	450		254
104/465 d/d (rpm) IRAM72/132S									
10 hp / 7.5 kw	1228	411	182	650	760	410	450		256
130/465 d/d (rpm) IRAM72/132M									
15 hp / 11 kw	1425	467	225	750	860	460	500	225	392
200/465 d/d (rpm) IRAM72/C132M									
20 hp / 15 kw	1492	494		850	950				424
68/139 d/d (rpm) IRAM92/160L									
25 hp / 18.5 kw	1437	470	248	750	860	460	500	180	412
188/456 d/d (rpm) IRAM82/180M									
25 hp / 18.5 kw	1528	510	241	850	950			225	445
85/185 d/d (rpm) IRAM92/180M									



Spare Parts List:





No.	Part Name.	Qty.
1	Hex Socket M10x40	6
2	M10 Washer	14
3	Back Cover	1
4	Back Cover O-Ring	1
5	Lip Seal $\phi 45 \times \phi 70 \times 10$	1
6	Squeezer 50	1
7	Lock Nut M50x1.5	1
8	Lock Washer M50	1
9	Left Helical Gear	1
10	Right Helical Gear	1
11	Lock Nut M60x2	2
12	Lock Washer M60	2
13	Bearing 30212 A	8
14	Bearing Spacer Sheet Material	4
15	Spacer	2
16	Pin $\phi 10 \times 30$	4
17	M12 Nut	4
18	M12 Washer	4
19	Casing	1
20	Oil Indicator R1/2"	1
21	Caps R1/2"	2
22	Studbolt M12x60	4
23	Adjusting Plate	2
24	Coupling Key 14x9x56 A	1
25	Gear Key 14x9x46 A	1
26	Driving Shaft	1
27	Driven Shaft	1
28	Lip Seal $\phi 68 \times \phi 95 \times 10$	2
29	Bearing Cover O-Ring	2
30	Bearing Cover	2
31	Hex Socket M8x30	6

No.	Part Name.	Qty.
32	Hex Socket M8x20	24
33	Flush Of Single Face Mechanical Seal	2
34	Lip Seal $\phi 60 \times \phi 75 \times 8$	2
35	Flush O-Ring	2
36	Mechanical Seal	2
37	Flush Of Double Face Mechanical	2
38	Flush Casing Of Double Face Mechanical Seal	2
39	Double Face Mechanical Seal	2
40	Internal Circlip ($\phi 80$)	2
41	Lip Seal $\phi 60 \times \phi 80 \times 8$	6
42	Flush Of Lip Seal	2
43	Inner O-Ring Of Lip Seal Housing	2
44	Outer O-Ring Of Lip Seal Housing	2
45	Front Face O-Ring Of Lip Seal Housing	2
46	Lobe Casing	1
47	Jacketed Lobe Casing	1
48	Ferrule	2
49	Rakor	2
50	Studbolt M10x50	8
51	Lobe O-Ring	4
52	Tri-Lobe	2
53	Bi-Lobe	2
54	Shaft Nut	2
55	Countersunk Head Screws M12x30	2
56	Cover O-Ring	1
57	Cover	1
58	Cover (w/ Heating Jacket)	1
59	M10 Domed Cap Nut	8
60	Horizontal Pump Foot	1
61	Hex Bolt M12x30	3