



TSURUMI PUMP

BX 3-phase
50Hz

Submersible sewage pumps - Explosion proof
- ATEX II 2G EX d IIB T4

Proprietary impeller and shaver mechanism
(special groove) ensures that waste water and
sewage are efficiently transferred.





Non-clog impeller

An impeller used in centrifugal pumps. This impeller is characteristic for preventing internal clogging by solids in the pumped liquid.

Optional Accessories:

- Guide rail fitting consisting of:
 - Guide support / Guide hook
 - Duck foot bend
 - Lifting chain



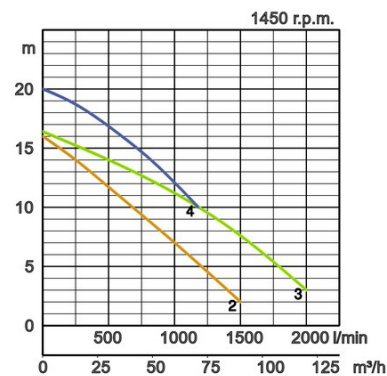
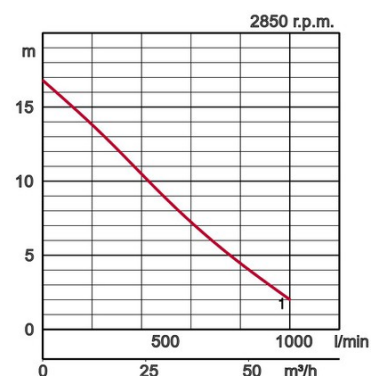
ATEX  II 2G Ex d IIB



Specifications:

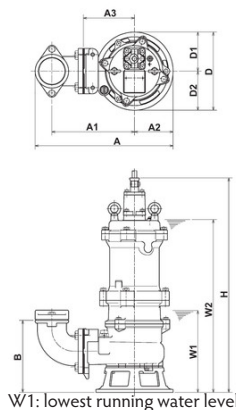
Model		Colour code curve	Bore mm	Power output kW	Phases	r.p.m.	Head max. m	Capacity max. l/min	Starting method	Dry weight kg without cable		Impeller passage mm
free standing	with guide rail fitting									free standing	with guide rail fitting	
80BX21.6	TOS80BX21.6	1	80	1,6	3	2850	16,8	1000	direct	52,0	50,0	49x41
100BX42.3	TOS100BX42.3	2	100	2,3	3	1450	16,0	1500	direct	79,0	73,0	47x53
100BX43.8	TOS100BX43.8	3	100	3,8	3	1450	16,4	2000	direct	93,0	87,0	81x53
100BX43.8H	TOS100BX43.8H	4	100	3,8	3	1450	20,0	1180	direct	92,0	86,0	35x62

ø Discharge bore mm		80mm,100mm		
Pumping Fluid	Temperature	0-40°C		
	Type of Fluid	Municipal sewage		
Pump	Components	Impeller	Non-clog impeller	
		Shaft Seal	Double mechanical seal	
		Bearings	Shielded ball bearings	
	Material	Impeller	Grey iron casting EN-GJL-200	
		Casing	Grey iron casting EN-GJL-200	
		Suction Plate	Grey iron casting EN-GJL-200	
Shaft Seal	Silicon carbide in oil bath			
Motor	Type, Poles	Induction motor, 2 poles, IP68, Induction motor, 4 poles, IP68		
	Lubrication	Turbine oil (ISO VG32)		
	Insulation	Insulation class F		
	Motor Protector (built-in)	Circle thermal cut-out		
	Phase / Voltage	3-phase / 400V / 50Hz / d.o.l.		
	Material	Casing	Grey iron casting EN-GJL-200	
		Shaft	Stainless steel EN-X30Cr13	
Cable		Rubber, 10m H07RN6G		
Discharge Connection		Inside thread, JIS10K flange		
Optional Accessories		Guide rail fitting "TOS" (guide support, duck foot bend, lifting chain) / Bend and stand set for free standing types		



Dimensions in mm:

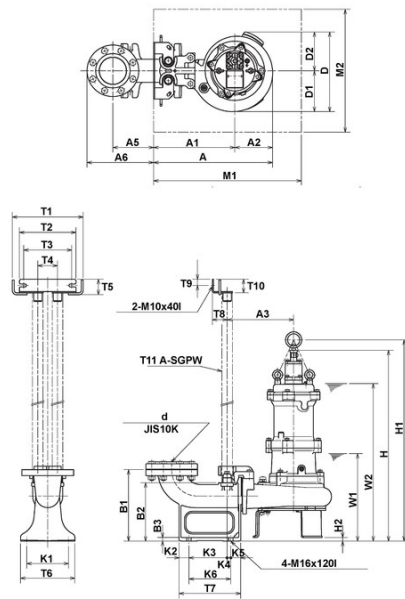
Model	A	A1	A2	A3	B	D	D1	D2	H	W1	W2
80BX21.6	446	267	125	165	234	250	125	125	695	265	560
100BX42.3	597	337	154	210	328	324	158	166	761	340	625
100BX43.8	602	337	159	210	334	333	158	175	838	355	700
100BX43.8H	604	337	161	210	328	344	169	175	814	345	680



Please mind: discharge bend, duck foot bend and stand set are accessories and must be ordered separately

Dimensions - guide rail fitting type in mm:

Model	A	A1	A2	A3	A5	A6	D	D1	D2	W1	W2	H	H1	H2	M1	M2
80BX21.6	410	285	125	225	165	258	250	125	125	315	610	744	786	49	500	400
100BX42.3	484	330	154	270	165	270	324	158	166	355	640	775	817	14	600	500
100BX43.8	489	330	159	270	165	270	333	158	175	365	710	847	889	9	600	500
100BX43.8H	491	330	161	270	165	270	344	169	175	360	695	828	870	14	600	500



W1: lowest running water level



Discharge bore mm	d	T1	T2	T3	T4	T5	T6	T7	T8	T9	T10	T11	K1	K2	K3	K4	K5	K6	B1	B2	B3
80mm	80	288	230	195	80	63	220	250	60	25	55	32	170	40	155	15	40	170	290	237	15
100mm	100	288	230	195	80	63	220	250	60	25	55	32	170	40	155	15	40	170	290	237	15

We reserve the right to change specifications and designs herein for improvement without prior notice. Our pumps are for professional use only. In the event that Tsurumi (Europe) GmbH have, in exceptional cases taken over, a manufacturer's warranty, this entitles the enduser to assert remedy free of charge against Tsurumi (Europe) GmbH due to any defect to the product occurring during the guarantee period (see below), also then when the warranty claims against the seller do not or no longer exist. In the event of malfunction, which is attributable to the improper handling by the enduser, no guarantee claim shall arise. Further claims shall not result from the warranty, unless if something to the contrary has explicitly been determined. The decision as to whether remedy is effected by way of replacement or repair shall be at the choice of Tsurumi (Europe) GmbH. The claims shall be time barred after a period of three months after expiry of the guarantee period, however, not before expiry of the warranty period which is valid towards the seller. In the event of doubt, the warranty period shall correspond with the warranty period which is valid between the end-user and his seller.

sew-BX-EN

